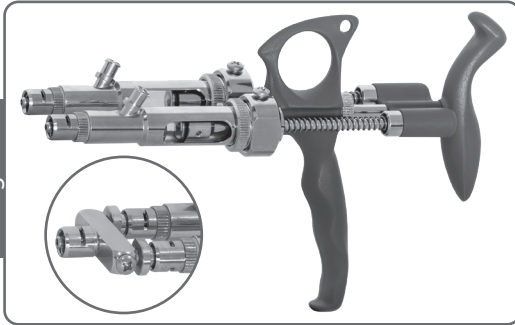


# Automatic Veterinary Syringes

## 2.0cc ThaMa 323

Double syringe Fixed Dosage  
with Clear Barrel and Vial Holder



### Instructions:

ThaMa double syringes are precise, reliable and accurate syringes. ThaMa double syringes are used for vaccinate two different dosages of various vaccines at once. Each syringe comes with a set of pistons.

### Before Use:

1. It's recommended to sterilize the syringe before each use.
2. Check that all screwed parts are tightened.
3. Make sure that the valve springs and washers are properly positioned into the base.

### How to set the dosage:

1. Unscrew the banding screw (#26) and pull out the syringe.
2. Unscrew the body cover (#13) and pull out from the body (#1).
3. Insert the key-pin (#20) into the hole on the piston.
4. Hold the top nut with tool and unscrew it out.

5. Take the spring (#15) and the body cover (#13) and put them on the new piston (#11) with the measure you need.
6. Replace the cover body, spring and the screw nut M4 (#12) in order.
7. Tighten the screw nut (#12): insert the key-pin into the hole on the piston and tighten gently with tool.
8. Put the syringe back in its housing (#25) (make sure that the top nut is in its hole at the piston shove) and screw the banding screw (#26) tightly.

**Make sure that you set the dosage in both syringes.**

### Using the Vial Holder:

1. Remove the black plastic clip (42).
2. Insert the vial (43) to the vaccine bottle and push it down.
3. Return the plastic clip back – connect the vial holder to the syringe.

**Pay attention that the black plastic clip is properly set!**

### Care and Maintenance:

1. Dismantle the vial from the vial holder.
2. Pump the syringe in clear water, 6-10 times, to remove any residue of the material from the body, needles, tube and valves.
3. Open the body cover (13) and wash all parts in clear water.
4. Open the luer lock needle adapter (02) wash the parts in clear water.
5. Oil the clear cylinder after cleaning.
6. Assemble the parts together.

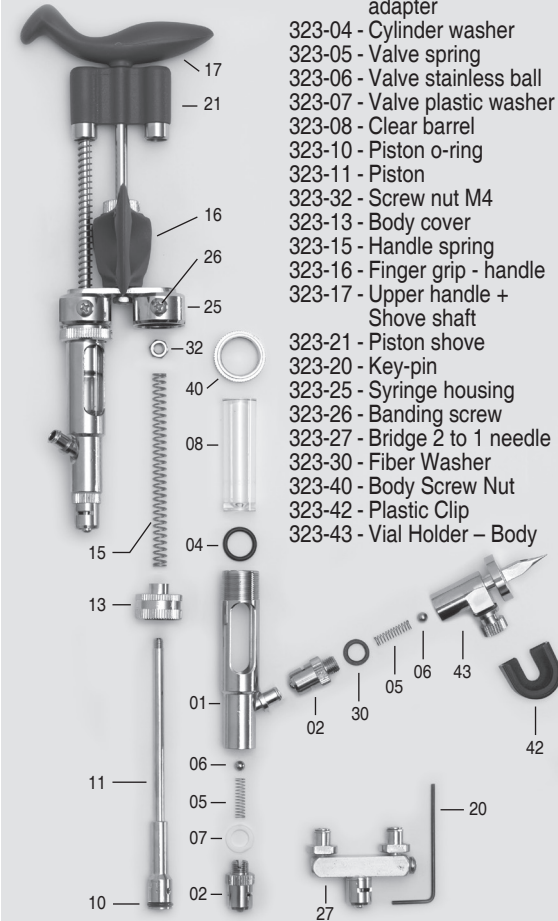
**Note: Pay attention, and take good care not to lose the small parts, like valves, valves springs, and valves plastic washers.**

### Recommended:

Use the original case for each syringe to keep it useful for long time.

### Sterilization:

All metal parts can be sterilized up to 125°C.  
All other parts can be sterilized by boiling water up to 100°C.



- 323-01 - Syringe body
- 323-02 - Luer lock,needle adapter
- 323-04 - Cylinder washer
- 323-05 - Valve spring
- 323-06 - Valve stainless ball
- 323-07 - Valve plastic washer
- 323-08 - Clear barrel
- 323-10 - Piston o-ring
- 323-11 - Piston
- 323-32 - Screw nut M4
- 323-13 - Body cover
- 323-15 - Handle spring
- 323-16 - Finger grip - handle
- 323-17 - Upper handle + Shove shaft
- 323-21 - Piston shove
- 323-20 - Key-pin
- 323-25 - Syringe housing
- 323-26 - Banding screw
- 323-27 - Bridge 2 to 1 needle
- 323-30 - Fiber Washer
- 323-40 - Body Screw Nut
- 323-42 - Plastic Clip
- 323-43 - Vial Holder - Body

### Piston + shaft #11:

- 0.5cc 1105
- 1.0cc 1110
- 2.0cc 1120

### 322-99 - Spare parts-kit include:

- |           |           |
|-----------|-----------|
| 323-04 x1 | 323-10 x2 |
| 323-05 x2 | 323-32 x1 |
| 323-06 x2 | 323-26 x1 |
| 323-07 x1 | 323-30 x1 |